

Mezi sebou Olympus Medical Products Czech

17.02.2026, Přešov, Jan Doležel, Česká optický klastr

Status as is now

Main Facts and Figures

Legal name:

Olympus Medical Products Czech Republic, spol. s r.o.

Business focus: **production of disposable products**

Investment: **6 mil EUR**

Building completion: **2009**

Employees: **500 in total (300 manufacturing; 200 repair)**

Surface:

3 500 m²

430 m² clean rooms

Energy efficient & environment friendly building

Working time:

Operators (1-2 shifts)

06:00 - 22:00, 5 days/w



Site History Timeline 1/2



ProCurve
production started

PumpTube
production started

First **100 employees**
reached



ENT Probes
production started



Redesign electrodes manual
production started
OPF 1 launched

Multivac 2
installation

OSTE CZ building opening

2009

2010

2011

2012

2013

2015

2016

2017

2019

First **electrodes** and **generators** dispatched

Multivac packaging machine in serial production



ProSurge production started
Clean room extension
First **Lean** Activities

Redesign electrodes automated production started

SAP Launch



Site History Timeline 2/2



Probes area transformation

Automatic line in OPF regime

First phase of Integration OMCZ/OCG

iTind launch of serial production

R&D Goes CZ
Number of R&D Engineers
25

2020 2021 2022 2023 2024 2025 2026 2027 2028 2029 2030

FTB 2 machine installation

Mobile Industrial Robot digital advantage (MiRda) in operation

R&D Goes CZ activities start

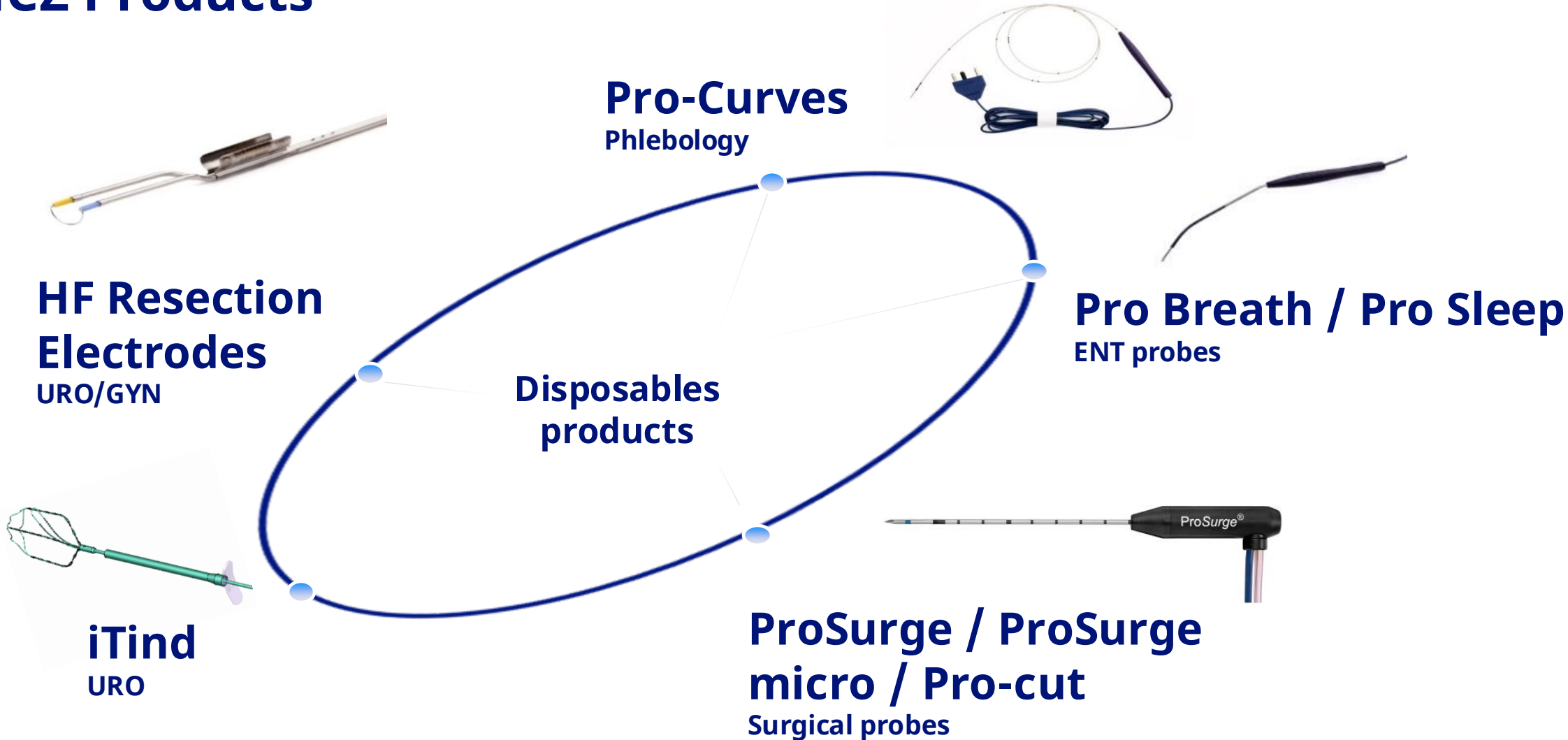
Number of R&D Engineers
5

Legal Integration of manufacturing and service part

Building extension completed



OMCZ Products



Pictures of Production

OPF line



OPF line



OPF line



ProSurge – new „U“ shape line



ENT a PCV – new „U“ shape lines



Packaging – new „U“ shape line

Production areas

Manual pre-assembly

- 22 operators / 2 shifts

Automated pre-assy (10 machines)

- 7 operators / 3 shifts



Clean room

- ISO 7, ISO 8
- 430 m²
- max. 45 operators / shift

OPF 1

- 28 operators / 2 shifts

OPF 2

- 18 operators / 2 shifts

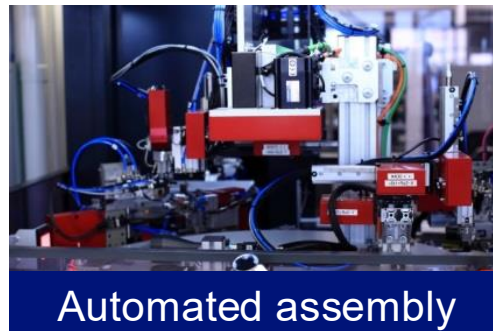


Multivac 1, Multivac 2

- 22 operators / 2 shifts

Automated assembly (2 modules)

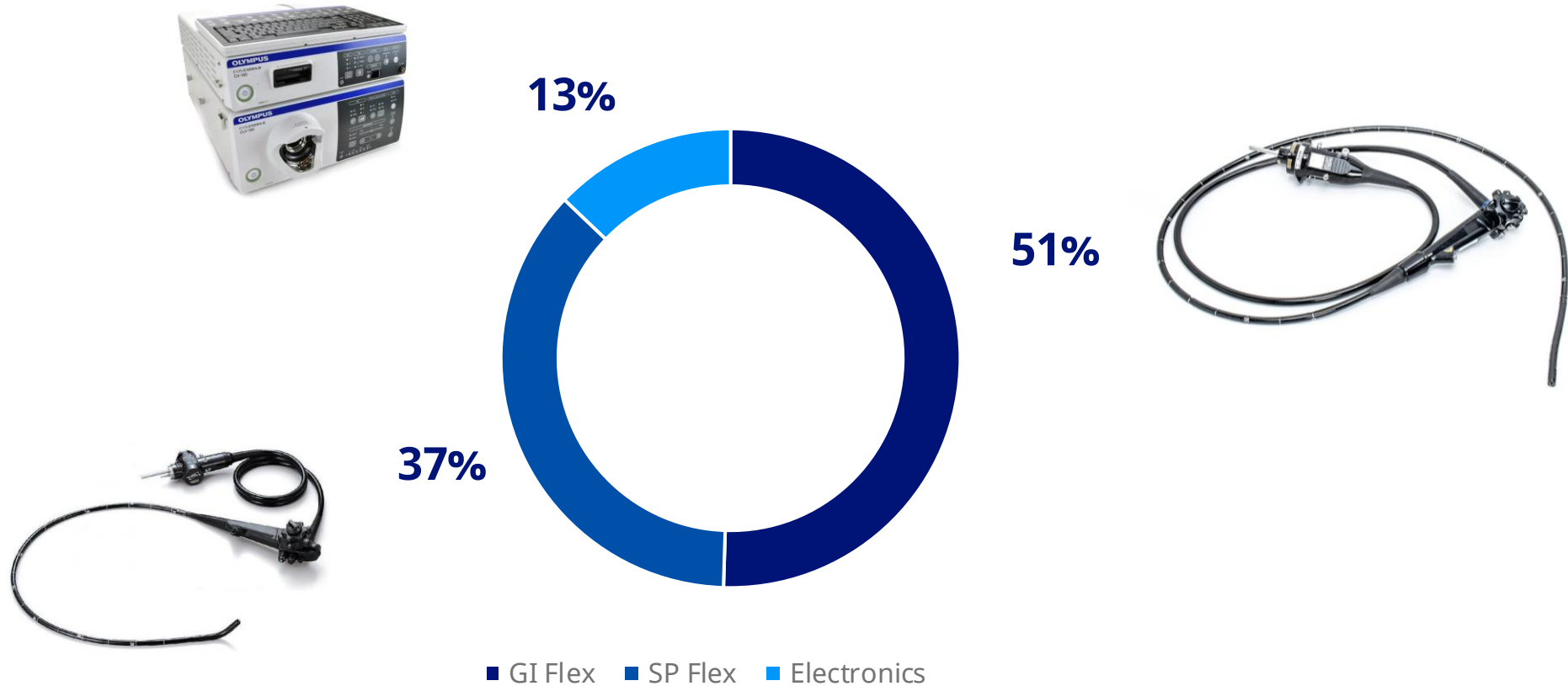
- 10 operators / 2 shifts



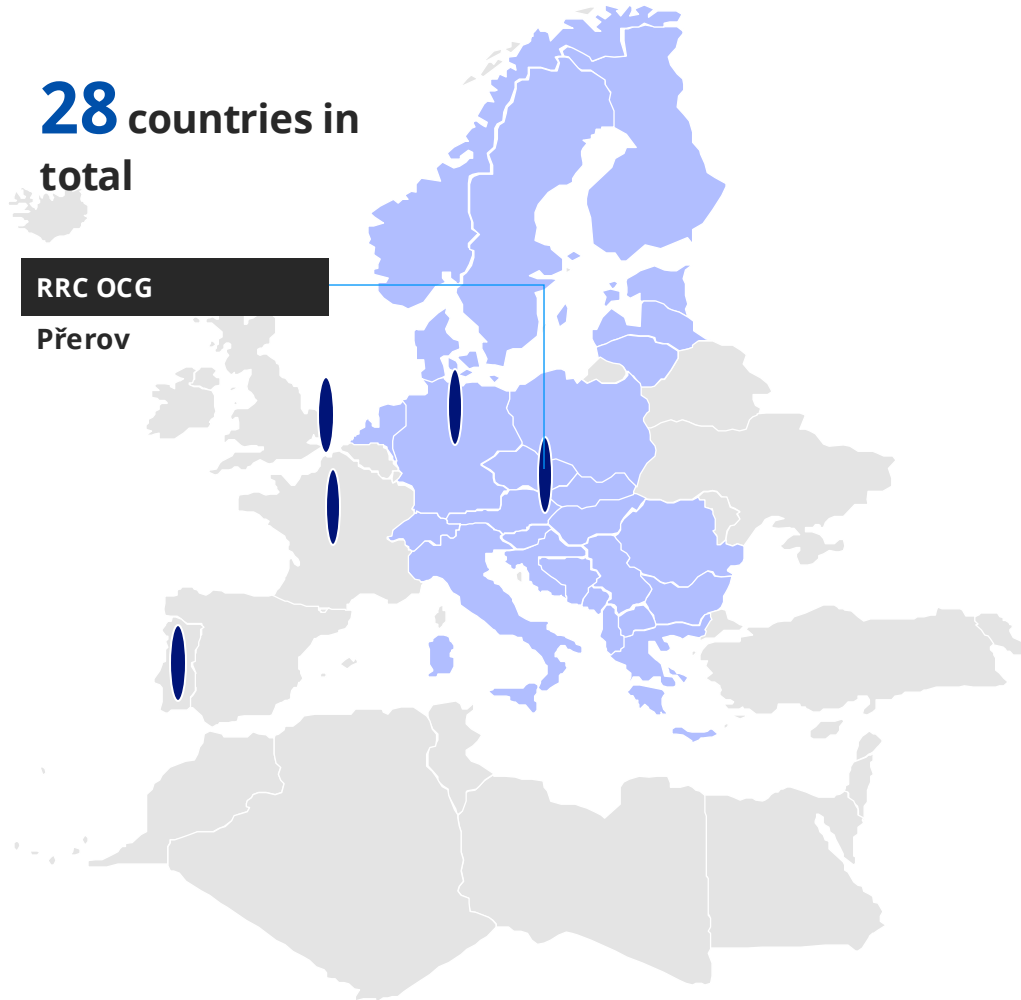
Lasers (5 machines)

- 11 operators / 3 shift

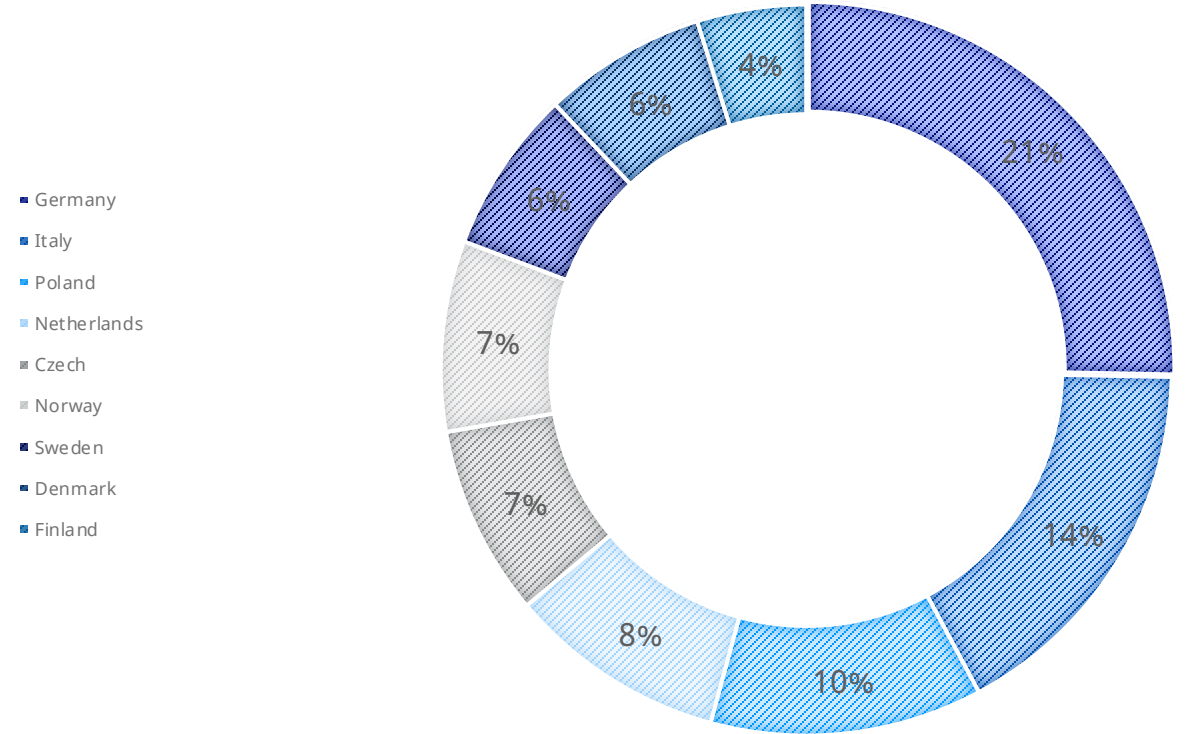
Products we repair – portfolio



Products we repair - regions

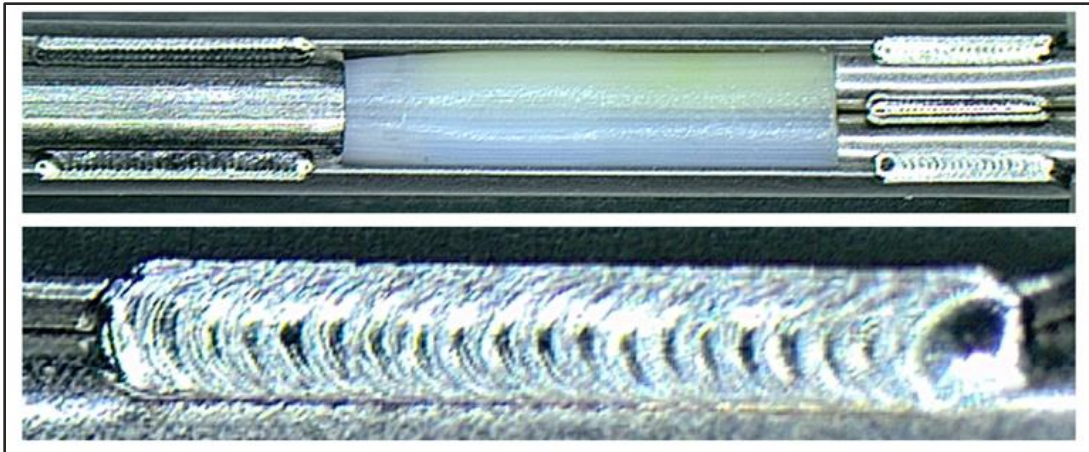
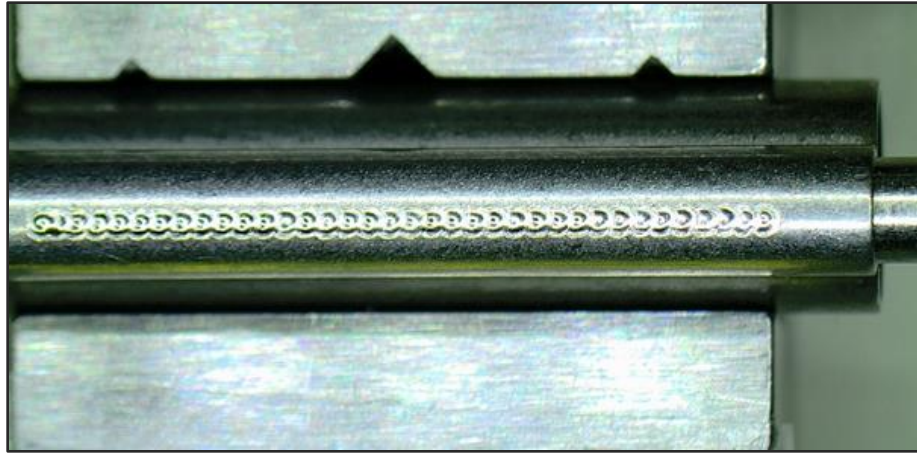


Countries representing 80% of volume



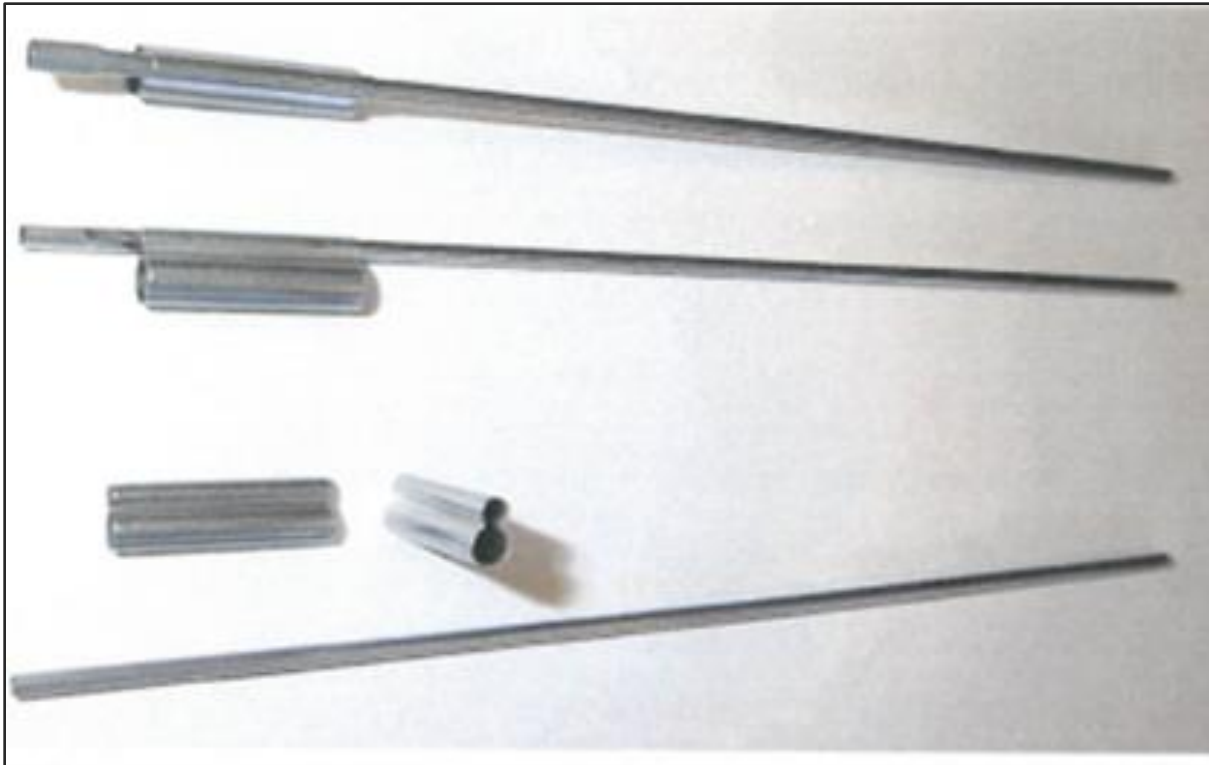
Technologies used in Přerov

Laser welding and laser marking



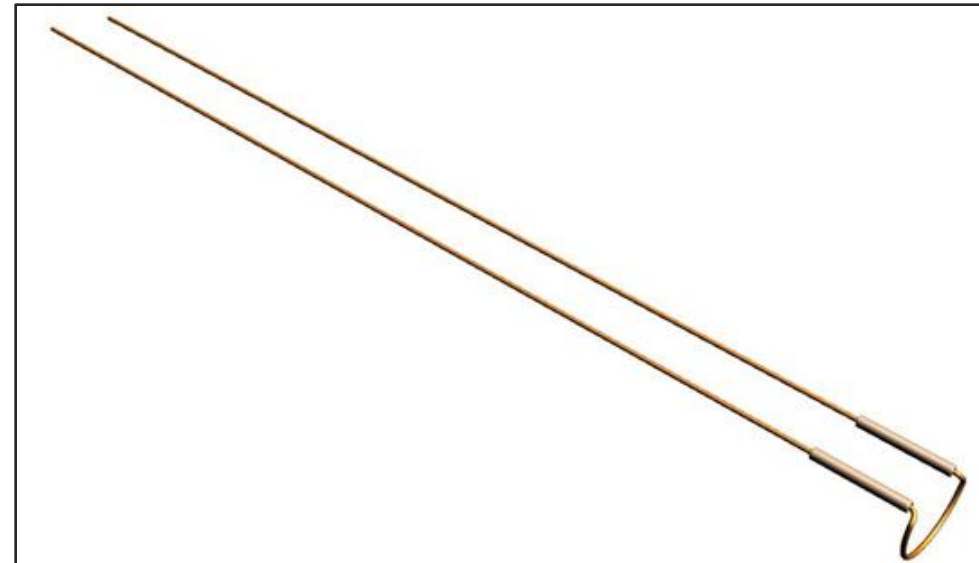
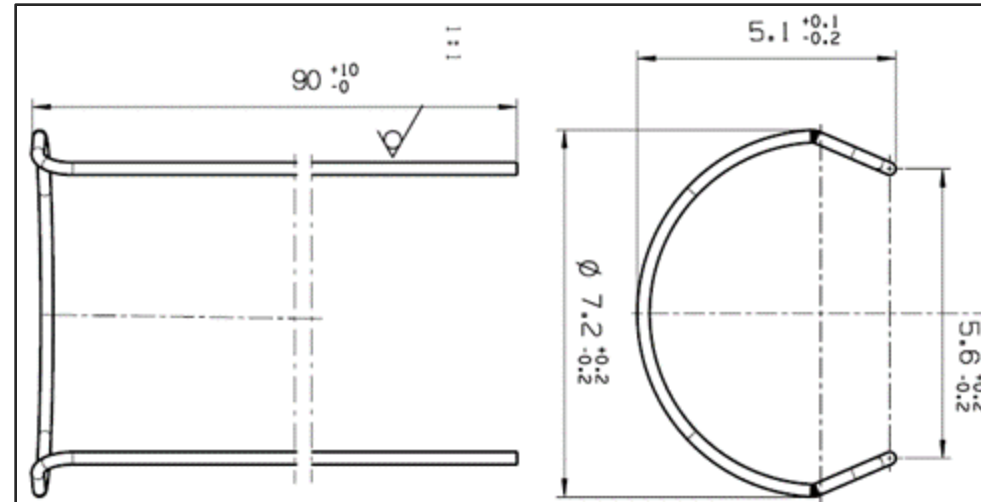
Technologies used in Přerov

Spot welding and widening (tube forming)



Technologies used in Přerov

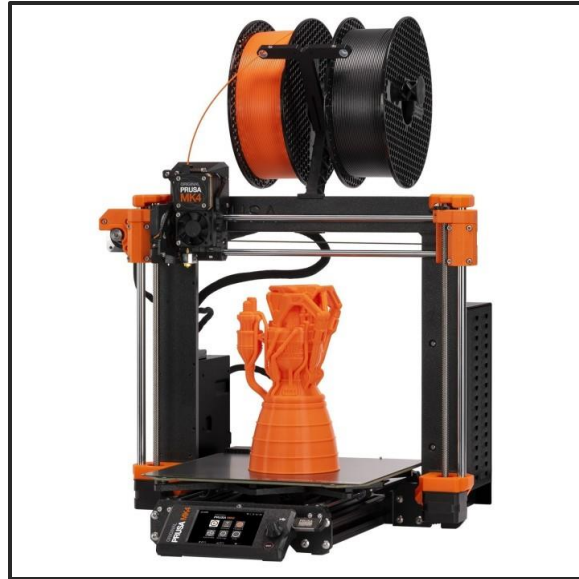
Wire bending



Technologies used in Přerov

3D printing

- FFF/FDM
- SLA – Resin
- SLS – Stainless steel



What is next?



+ 9.700 m²

Extending Current Size of ~ 5.700 m²

In 2,5 Years

Project Timeline

**200 new
employees**

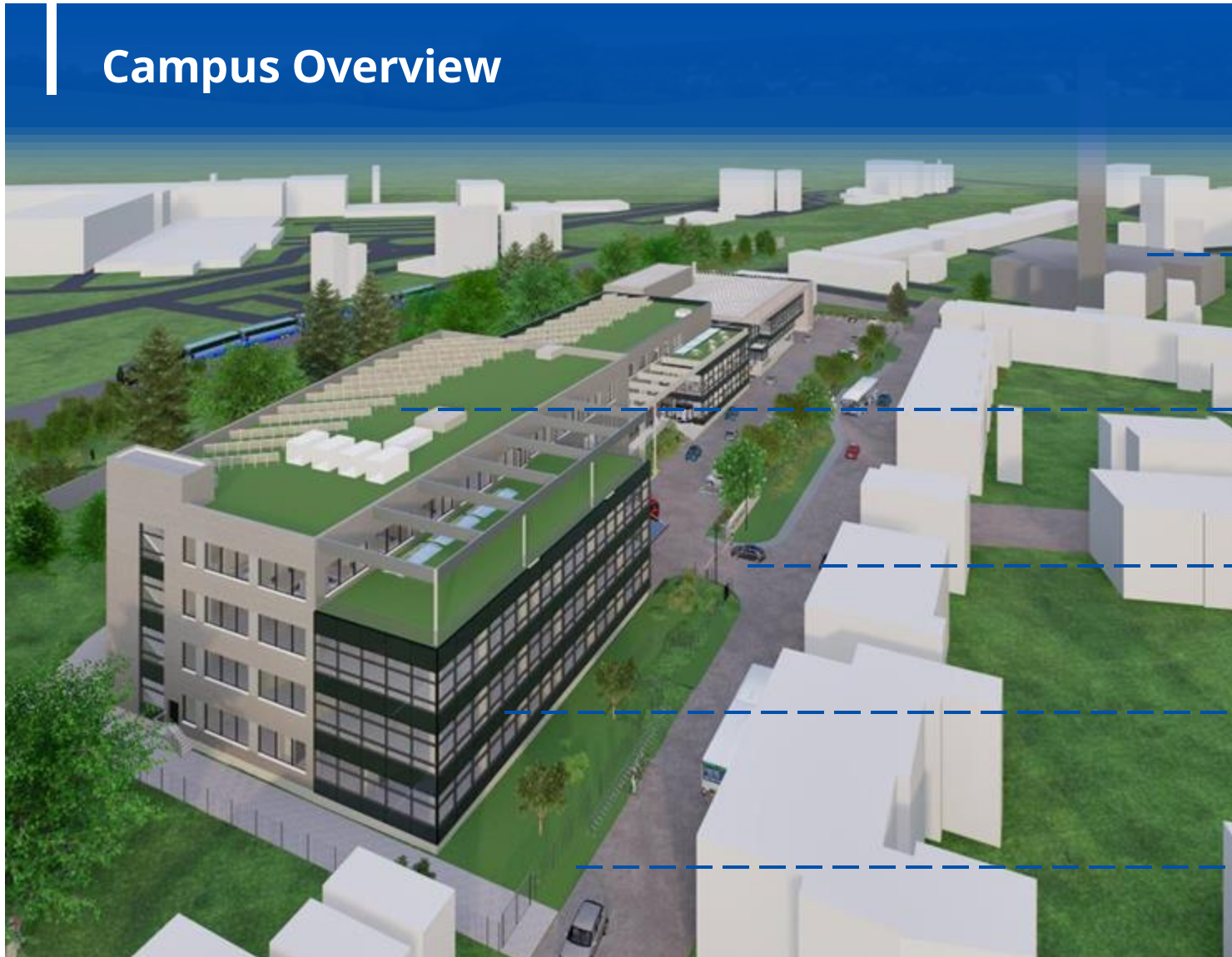
LEED



Sustainable Building Certificate

One Campus for all Employees with Newest Technologies

Campus Overview



Insource Leon Building

Providing a modern workplace on the new campus for every employee



Green Energy

Equipping the campus with green energy solutions, e.g., solar panels



Campus Access

Upgrading the current entrance/ access situation



Building Automation

Installing a modern BMS* to control the technical building equipment



Security System

Improving the security system (incl. fence) to meet latest EMEA standards

*) Building Management System

OLYMPUS

New Campus Will Consist of Three Operation Buildings

Building Overview

Construction of New Building

- Harmonized OCG & OMCZ Logistics
- Service Growth Area
- Insourced Electronics Operations
- Office Area incl. Modern Collaboration Areas



Renew Building

- Manufacturing Growth Area
- Service Growth Area
- Unified Social Area
- Cutting-Edge Technical Equipment Update



Improve Infrastructure

- Upgraded IT-Infrastructure
- Improved and Enlarged Social Areas



OLYMPUS

The logo consists of the word "OLYMPUS" in a bold, dark blue, sans-serif font. Below the text is a horizontal line that is yellow in the center and transitions to a light blue color at the ends, creating a stylized underline.